

# State of Wyoming Corner Record

(In compliance with the *CORNER PERPETUATION AND FILING ACT*, Wyoming Statutes, 1977, Section 36-11-101, et. seq., and the Rules and Regulations of the Board of Registration for Professional Engineers and Professional Land Surveyors)

Reverse side of this form may be used if more space is needed.

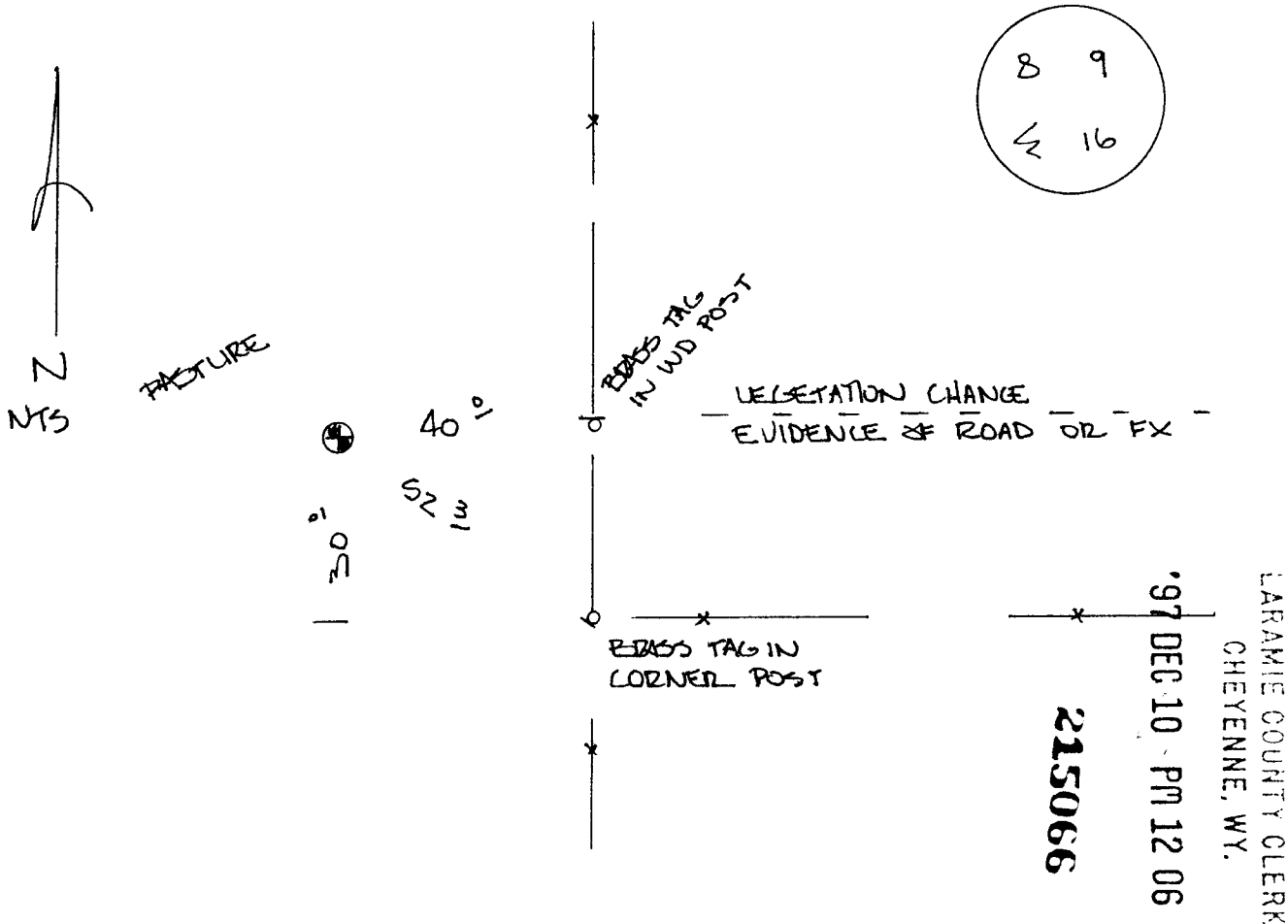
Record of original survey and citation of source of historical information (if corner is lost or obliterated). Description of corner monumentation evidence found and/or monument and accessories established to perpetuate the location of this corner. Sketch of relative location of monument, accessories, and reference points with course and distance to adjacent corner(s) (if determined in this survey). Method and rationale for reestablishment of lost or obliterated corner.

ORIGINAL CALL:

SANDSTONE 20" x 12" x 4"

FOUND 1" x SMOOTH STEEL BAR 0' BELOW SURFACE. TOP OF BAR IS FAINTLY STAMPED. ORIGIN UNKNOWN.

FOUND NO OTHER EVIDENCE OF ORIGINAL CORNER.



Date of Field Work: 11-04-97

Office Reference: SILD

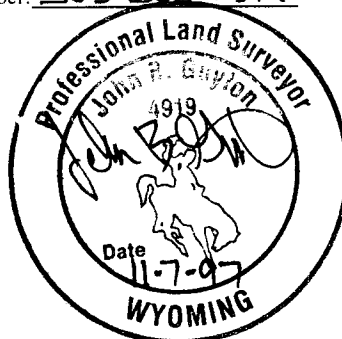
### CROSS INDEX DIAGRAM

A	1	2	3	4	5	6	7	8	9	10	11	12	13	14	15	16	17	18	19	20	21	22	23	24	25
B																									
C		6			5				4					3					2						1
D																									
E																									
F																									
G																									
H																									
J																									
K																									
L																									
M																									
N																									
O																									
P																									
Q																									
R																									
S																									
T																									
U																									
V																									
W																									
X																									
Y																									
Z																									

Firm/Agency, Address

JOHN B GUYTON  
GEOSURV INC  
520 STACY CT STE B  
LAFAYETTE CO 80026

Telephone Number: 303 666 0379



This corner record was prepared by me or under my direction and supervision.  
 SEAL & SIGNATURE

Corner Name: NW SECTION COR Section: 16 T 15N R 63W, 6 P.M. Cross-Index No.: J. 9

SBRPEPLS/PLSW: March 1994

**BOOK 1467**

**0754**